



A Fluke Company

# XDL12 Furnace Survey System

...external data logging from Datapaq®

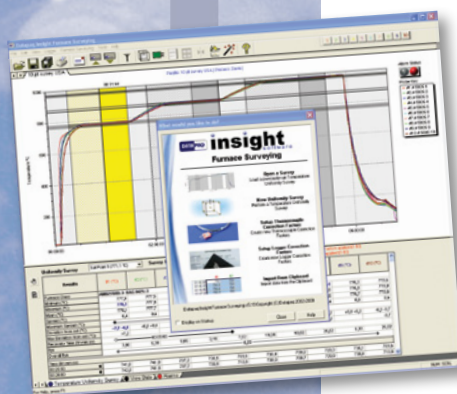
The Datapaq XDL12 Furnace Survey System provides the complete solution for performing temperature uniformity surveys in batch and vacuum furnaces where external data collection is desirable.

When combined with powerful Insight™ Survey analysis software, the XDL12 ensures that temperature uniformity surveys required by AMS 2750D standards are achieved quickly and accurately.



## FEATURES & BENEFITS

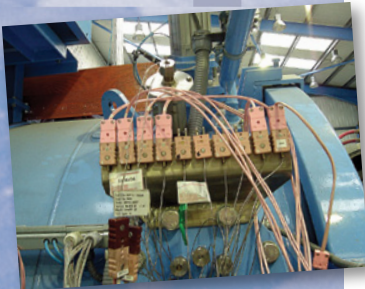
- Choose the thermocouple types required for your application and Datapaq will pre-configure all 12 channels to meet your exact needs.
- Thermocouple sockets are color coded to IEEE specification, eliminating mistakes with setup and saving technicians valuable time.
- Accepts standard thermocouple plugs to give a positive and reliable connection (no screw connections), reducing the risk of survey failures and expensive furnace downtime.
- Accurate and reliable, the XDL12 meets or exceeds AMS 2750D specification requirements for field test instruments.
- Quality build guaranteed. The XDL12's robust casing is constructed of high grade stainless steel and is completely sealed from dust to IP50 specification.
- With a rechargeable battery for up to 60 hours of use, there is no need to rely on a main power input.
- Fully portable, set up the XDL12 wherever it is most convenient for you.
- When combined with the laptop stand, the XDL12 takes up little workspace area.
- Only a start/stop button operation ensures ease of use. All other operations are via the PC, using Datapaq Insight Survey analysis software.
- Data accuracy guaranteed. The XDL12 is fully protected from outside interferences.
- Clear, easy to read LEDs show logger status at all times.



## INSIGHT SURVEY ANALYSIS SOFTWARE

- Dedicated survey software with comprehensive set-up wizards, analysis functions and report layouts.
- One single software package for TUS (Temperature Uniformity Survey) set up, thermocouple and logger calibration correction factors, and AMS 2750D report generation. No further software modules required.
- Provides complete AMS 2750D documentation.
- Stores, recalls and applies all thermocouple and logger calibration details.
- Displays tolerances and set points in real-time.
- Alerts for stabilization, survey time and overshoot alarm means survey time is minimized and production time is maximized.
- Automatically performs all the required AMS 2750D calculations.

# TECHNICAL SPECIFICATIONS



**Part Number** XD0012  
**Number of Channels** 12 channels, sockets will accept standard size thermocouple plugs  
**LEDs** 2 x battery (low and charging)  
 2 x status  
**Thermocouple Combinations** Combination of 3 types  
 Examples: 10 type N + 2 type S.  
 9 type K + 3 type R, etc.  
 Specify at time of ordering

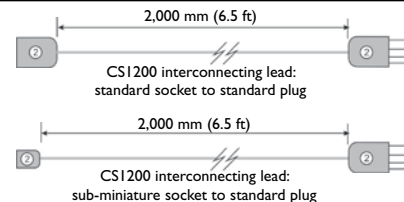
Thermocouple Type	Measuring Range	Accuracy	Resolution
Type K	-100°C* to 1370°C (-148°F* to 2498°F)	± 0.3°C (± 0.5°F)	0.1°C (0.2°F)
Type N	-100°C* to 1300°C (-148°F* to 2370°F)	± 0.4°C (± 0.7°F)	0.1°C (0.2°F)
Type R	50°C* to 1760°C (122°F* to 3200°F)	± 1.1°C (± 2.0°F)	0.1°C (0.2°F)
Type S	50°C* to 1760°C (122°F* to 3200°F)	± 1.1°C (± 2.0°F)	0.1°C (0.2°F)
Type J	0°C to 800°C (32°F to 1470°F)	± 0.3°C (± 0.5°F)	0.1°C (0.2°F)
Type T	-100°C* to 400°C (-148°F* to 750°F)	± 0.3°C (± 0.5°F)	0.1°C (0.2°F)

**Maximum operating temperature range** 0°C to 55°C (32°F to 130°F)  
**Humidity operating range** 0 to 85% RH non-condensing  
**Battery type** NiMH Re-chargeable  
**Battery life** 60 hours  
**Power input** 12V DC from universal 100/230V AC  
**Communication** Via USB  
**Sampling interval range** One second to 50 minutes  
**Case size** Height (without computer rest) = 60mm (2.36 in)  
 Height (with computer rest) = 80mm (3.15 in)  
 Width (overall) = 330mm (13.0 in)  
 Depth (including handle) = 340mm (13.4 in)  
**Weight** 6.5kg (14.3lbs)  
**Case IP rating** IP50  
**Logger start** Manual (start button); Time; Temperature Trigger (rise/fall) on any thermocouple  
**Insight software** V6.0 and above  
**Hot data protection** Non-volatile memory and software warning if reset attempted before download  
**Telemetry** Hard wired only

## Interconnecting leads

Interconnecting leads connect between the plug on the vacuum furnace and the data logger.

Leads are available in all types of thermocouples.



## The Worldwide Leader in Temperature Profiling

**Europe and Asia**  
 DATAPAQ Limited,  
 Deanland House, 160 Cowley Road,  
 Cambridge CB4 0GU, UK  
 Tel: +44 (0) 1223 423 141  
 Fax: +44 (0) 1223 423 306  
 E-mail: sales@datapaq.co.uk  
 Web: www.datapaq.com

**North and South America**  
 DATAPAQ Inc.,  
 187 Ballardvale Street,  
 Willmington, MA 01887, USA  
 Tel: +1 978 988 9000  
 Fax: +1 978 988 0666  
 E-mail: sales@datapaq.com  
 Web: www.datapaq.com

**Germany**  
 DATAPAQ GmbH,  
 Valdorfer Straße 100  
 D-32602 Vlotho, Deutschland  
 Tel: +49 5733 9107 0  
 Fax: +49 5733 9107 27  
 E-mail: sales@datapaq.de  
 Web: www.datapaq.de



[www.datapaq.com](http://www.datapaq.com)

© 2011 Datapaq (2135 Rev B) 7/2011  
 Datapaq and the Datapaq logo are registered trademarks of Datapaq. Specifications subject to change without notice.