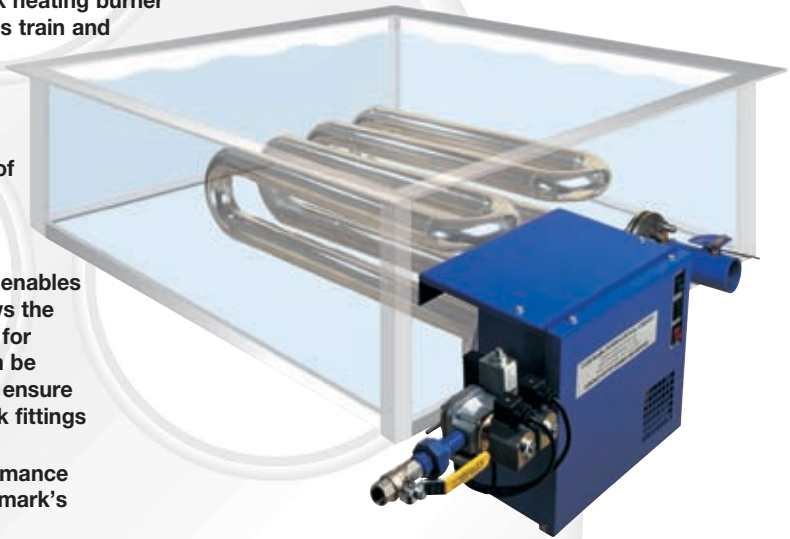


Lanemark TRX series packaged, high efficiency, small diameter immersion tube tank heating systems meet the needs of industrial process tanks which have heat input requirements of up to 45 kW (150,000 Btu/h). Built to the same exacting standards as the larger capacity TX modular tank heating burner systems, the TRX burner incorporates burner, gas train and control system and is packaged to simplify/minimise plant installation work.

Specific advantages compared with alternative tank heating methods –

- Low operating costs – operating efficiencies of $\geq 80\%$ gross calorific value $\geq 90\%$ net calorific value
- TRX small diameter immersion tube heat exchangers occupy minimal tank space. This enables smaller tanks for new plant designs and allows the simple replacement of other heating systems for retrofit applications. TRX immersion tubes can be configured in almost any multi-pass shape to ensure that they remain well clear of any internal tank fittings or processing areas.
- All tank heat input and immersion tube performance calculations are easily carried out using Lanemark's dedicated computer design software.
- Induced draught combustion air system allows multiple burner systems to be connected to a common flue while retaining individual burner control.
- Operates with low gas supply pressures.
- Firing into rubber lined or fibre glass tanks is permitted due to low initial heat exchanger surface temperatures at tank connection.
- Simple heat exchanger installation requires only two pipe flange drillings, usually in one tank wall.
- Fully compatible with Lanemark TX burner systems so that they may be incorporated into schemes where multiple TRX/TX burner arrangements are required.



| Model | Tube Size | Maximum Heat Input | |
|-------|------------|--------------------|-----------------|
| TRX15 | 1½" (40mm) | 45 kW | (150,000 Btu/h) |
| TRX20 | 2" (50mm) | 45 kW | (150,000 Btu/h) |

Typical Applications

- **Product finishing**
(metal parts, steel strip, wire products, etc.)
 - Pre-treatment and treatment processes including:
 - alkali/caustic degreasing
 - phosphating
 - hot water rinsing
 - aluminium etching
 - anodising
 - borax and lime coatings
 - Dip tanks
 - Spray systems
 - Hot water supply systems
- **Cleaning**
(industrial washing machines)
 - Plastic crate washers
 - Parts washers
 - Bottle washers
- **Food and Drink Production**
 - Hot water tanks
 - Mini brewery wort coppers
 - Cleaning in place (CIP) tanks
 - Animal scalders
 - Blanchers

TRX burners conform with European Standard EN 746 Part 2 as appropriate and are pre-wired and tested prior to despatch.

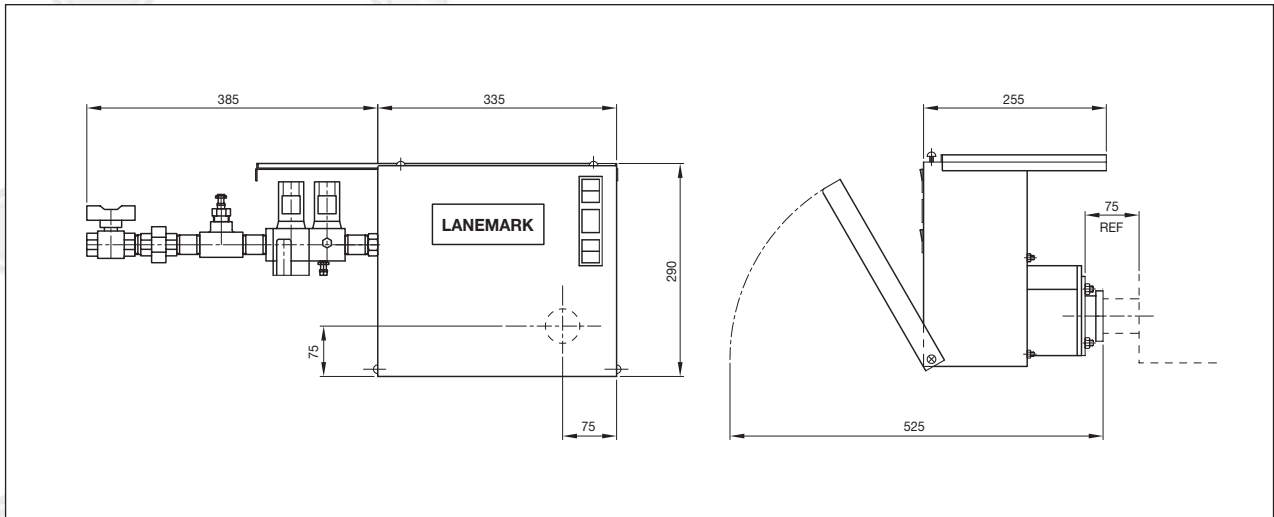
Specifications

Lanemark packaged TRX immersion tube burner systems are assembled within a splash-proof enclosure and incorporate the burner, gas valve train and burner controls,

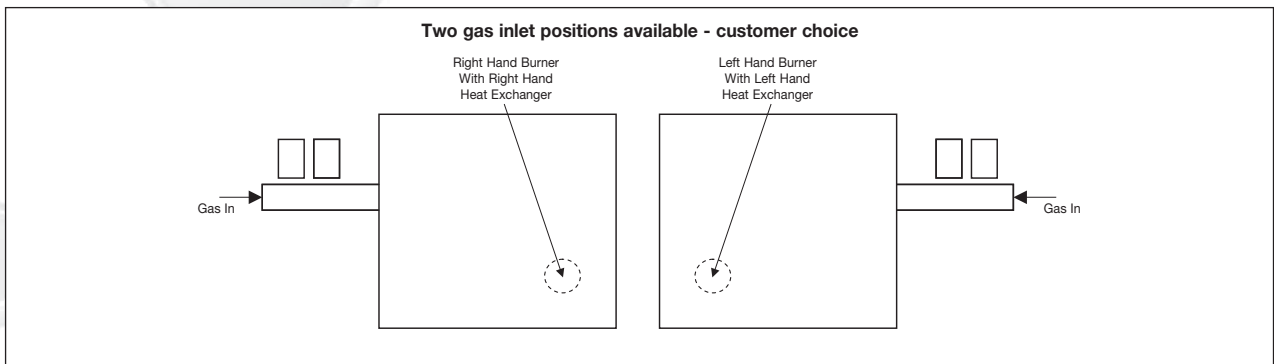
exhaust damper and an exhaust fan which can be coupled to multiple TRX/TX burner installations.

| | ✓ Standard equipment | ● Options |
|---------------------------------|----------------------|-----------------|
| Fuels | ✓ Natural gas | ● Propane |
| Control voltages | ✓ 230V | ● 110V |
| Exhaust fan electrical supplies | ✓ 400V/3ph/50Hz | ● 230V/1ph/50Hz |
| Flame sensing | ✓ Flame electrode | |
| Heat output control options | ✓ On/off or High/low | |

TRX TANK HEATING SYSTEMS



All dimensions in mm, except where stated.



LANEMARK
BurnerCare

All TRX burners benefit from Lanemark's BurnerCare customer support. BurnerCare services include burner system commissioning/start-up, supply of spare parts and system training. BurnerCare will provide a contract service plan and a rapid response facility, designed to ensure the continued and reliable operation of Lanemark equipment worldwide.

Additional Burner Products *(See individual Data Sheets for full details)*

Also available from Lanemark is the TX range of larger capacity modular tank heaters and the FD range of high turn-down process air heating oven and dryer burner products.

All illustrations are for guidance only. For reasons of continuous development, Lanemark International Limited reserves the right to alter specifications without prior notice.

LANEMARK
INTERNATIONAL

Registered Address: Lanemark House, Whitacre Road, Nuneaton,
Warwickshire, UK, CV11 6BW
Tel: +44 (0) 24 7635 2000 Fax: +44 (0) 24 7634 1166
E-mail: info@lanemark.com Web site: <http://www.lanemark.com>
Company Registration No. 1561589 VAT No. GB 307 5790 48
Place of Registration: England & Wales
Directors: P.R. Collier, J.S. Foster, A.E. Thompson

